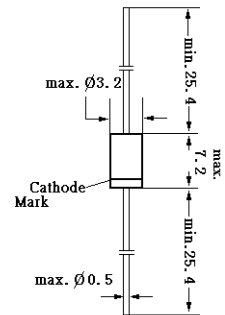


1N60P, 1N60S

POINT CONTACT GERMANIUM DIODES

1N60 is a point contact diode employing N-from Germanium and gives an efficient and excellent linearity when used in TV image detection, FM detection, radio, AM detection, etc.



Glass case JEDEC DO-7
Dimensions in mm

Absolute Maximum Ratings ($T_a = 25^\circ\text{C}$)

	Symbol	Value	Unit
Peak Reverse Voltage	V_{RM}	45	V
Reverse Voltage dc	V_R	20	V
Peak Forward Current	I_{FM}	150	mA
Average Rectified Output Current	I_O	50	mA
Surge Forward Current	I_{surge}	500	mA
Junction Temperature	T_j	75	$^\circ\text{C}$
Storage Temperature Range	T_{Stg}	-55 to +175	$^\circ\text{C}$

Characteristics (1N 60 P)

	Symbol	Test condition($T_a 25 \pm 2^\circ\text{C}$)	Min.	Typ.	Max.	Unit
Forward Current	I_F	$V_F = 1V$	4	-	-	mA
Reverse Current	I_R	$V_R = 10V$	-	-	50	μA
			-	-	100	μA
Junction Capacitance C	-	$f = 1\text{MHz}, V = -1V$	-	-	1	pF
Rectification efficiency	n	$V_i = 2V_{rms}, R = 5K\Omega$ $C = 20PF, f = 40\text{MHz}$	55	-	-	%

Pair $\Delta I_F \leq 6\text{mA}$ at 1V, $\Delta I_R \leq 20\mu\text{A}$ at 10V

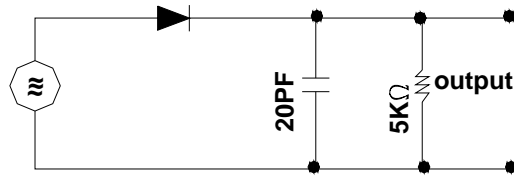


日冠電子有限公司
PACO ELECTRONICS CO LTD
www.paco-electronics.com



Dated : 26/09/2003

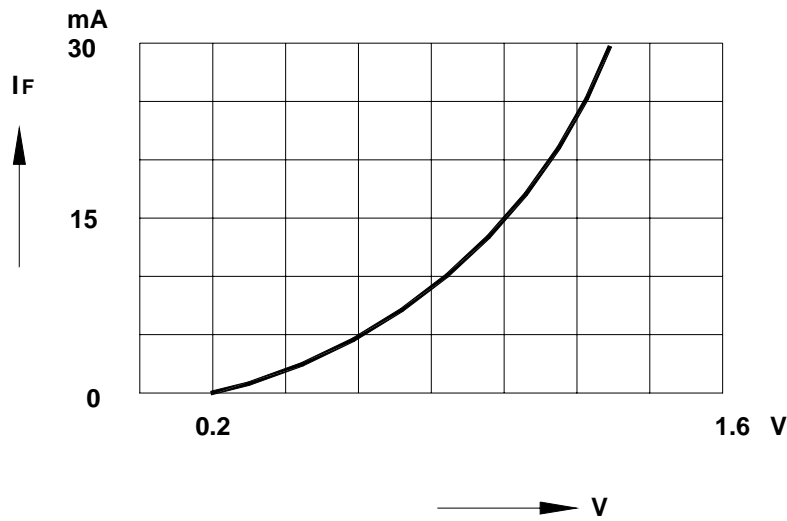
1N60P, 1N60S



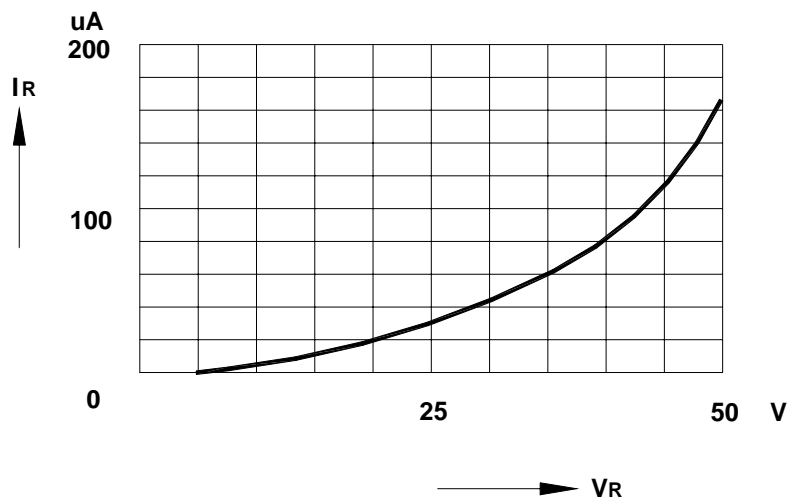
Input 2Vrms

Rectification Efficiency Measurement Circuit

Forward Characteristics



Reverse Characteristics



日冠電子有限公司
 PACO ELECTRONICS CO LTD
www.paco-electronics.com



Dated : 26/09/2003